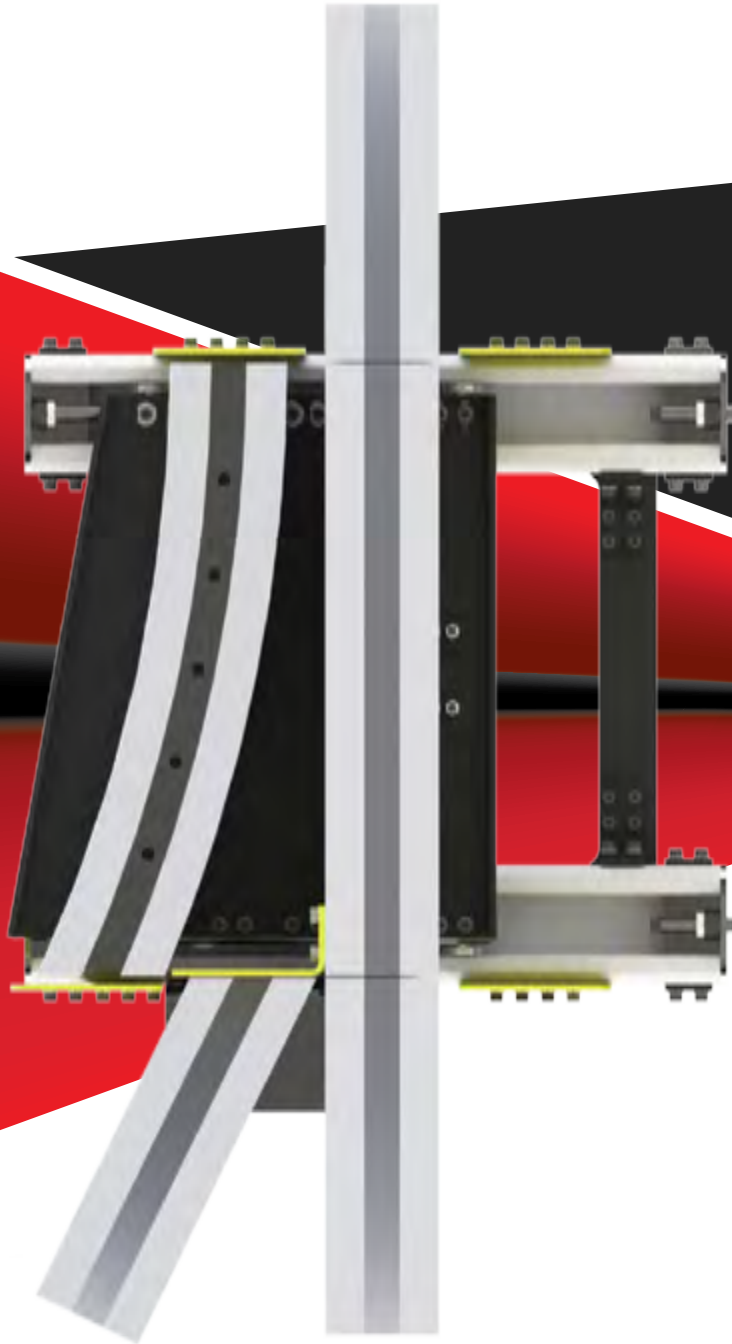




**KNIGHT**  
GLOBAL



Aluminum  
**Switch Track**

## Introduction

Overview . . . . . 1

## Knight Global | Warranty Information

Knight warrants that its products and parts shall meet all applicable specifications, performance requirements, and be free from defects in material and workmanship for one year, (Servo Systems for two years, Pneumatic Lift Tables for 5 years), from the date of invoice, unless otherwise noted. One exclusion would include any purchased components not manufactured by Knight and their specific individual warranties. Paint defects, scratches and marring from shipping are also excluded.

This warranty shall not cover the failure or defective operation caused by inadequate training provided by customer regarding the operation and / or maintenance of the tool, misuse, negligence, misadjustment, or any alteration not approved by Knight. Knight's obligation is limited to the replacement or repair of Knight's products at a location designated by Knight. Buyer is responsible for all associated internal removal and re-installation costs as well as freight charges to and from Knight Industries. Knight's maximum liability shall not in any case exceed the contract price for the products claimed to be defective.

Knight warrants the Servo Hoist, Arms, and Tractors to be free from defects in material or workmanship for a period of two years or 6000 hours use from the date of shipment.

Knight Distributors/ Agents are not authorized to circumvent or change any of these terms and or conditions of this warranty unless prior approval is received in writing by Knight Global Management. Verbal statements made by Knight Distributors/ Agents do not constitute warranties.

On a design and build job, the customer is the owner of the equipment once they authorize shipment. The purchased equipment can not be returned for reimbursement or credit.

Disclaimers: OTHER THAN AS SET FORTH HEREIN, NO OTHER EXPRESSED WARRANTIES, AND NO IMPLIED WARRANTIES, ORAL AND WRITTEN, INCLUDING BUT NOT LIMITED TO THE WARRANTIES OF MERCHANTABILITY OR FITNESS FOR A PARTICULAR PURPOSE ARE MADE BY KNIGHT WITH RESPECT TO ITS PRODUCTS AND ALL SUCH WARRANTIES ARE HEREBY SPECIFICALLY DISCLAIMED. KNIGHT GLOBAL SHALL NOT BE LIABLE UNDER ANY CIRCUMSTANCES FOR ANY INCIDENTAL, SPECIAL AND / OR CONSEQUENTIAL DAMAGES WHATSOEVER, WHETHER OR NOT FORESEEABLE, INCLUDING BUT NOT LIMITED TO ANY AND ALL DAMAGES FOR LOST PROFITS AND ALL SUCH INCIDENTAL, SPECIAL AND/ OR CONSEQUENTIAL DAMAGES ARE HEREBY ALSO SPECIFICALLY DISCLAIMED.



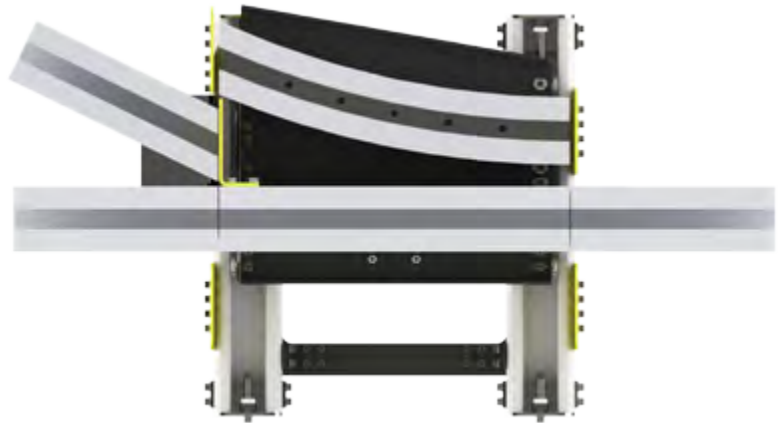
We are committed to  
**Total Customer Satisfaction**  
through  
**QUALITY, RELIABILITY and**  
**EMPLOYEE INVOLVEMENT.**

# Overview

Knight Global's RAD Series Rail Switch Track allows for fixtures to be transferred between work zones without cranes, fork trucks, or disassembling the system. Knight's Switch Track is available in RAD4110, RAD6110 and RAD7510 series rail. The RAD Series Switch Track is a pneumatically operated track system that can be controlled from a fixture control handle or from a pendant switch which hangs below the switch track.

## Features

- Transfers fixtures between workstations.
- Pneumatically Operated.
- RAD4110, RAD6110 and RAD7510 Applications Available.
- Fixture Control Handle or Pendant Switch Operated.
- No Special End Trucks Required.
- All Knight Trolleys are capable of traveling inside Switch Track.
- Max. Capacity: [Contact for Capacities.](#)

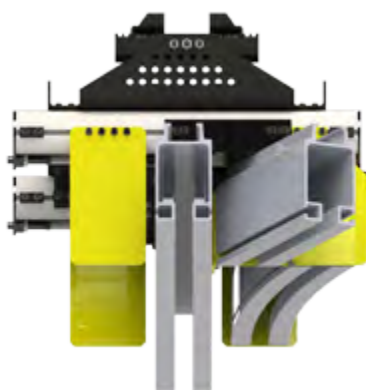


Bottom View

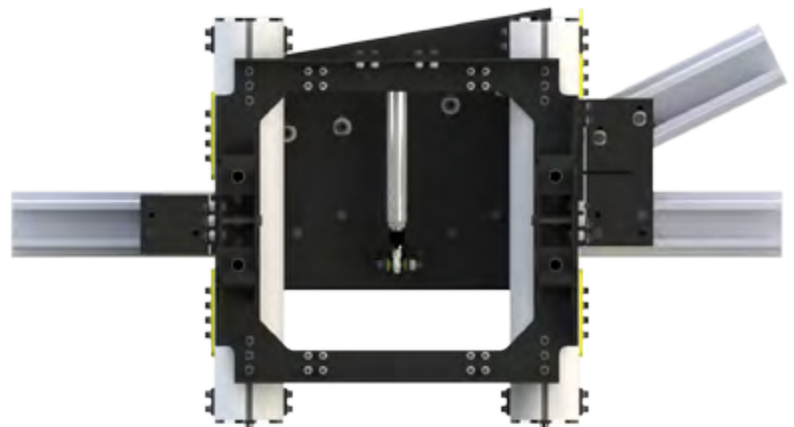


Side View

**Note:** Hangers are specific for switch track (I-beam style only). Other types of rail hangers must be adjustable or match Switch Track stack-up.



Front View



Top View