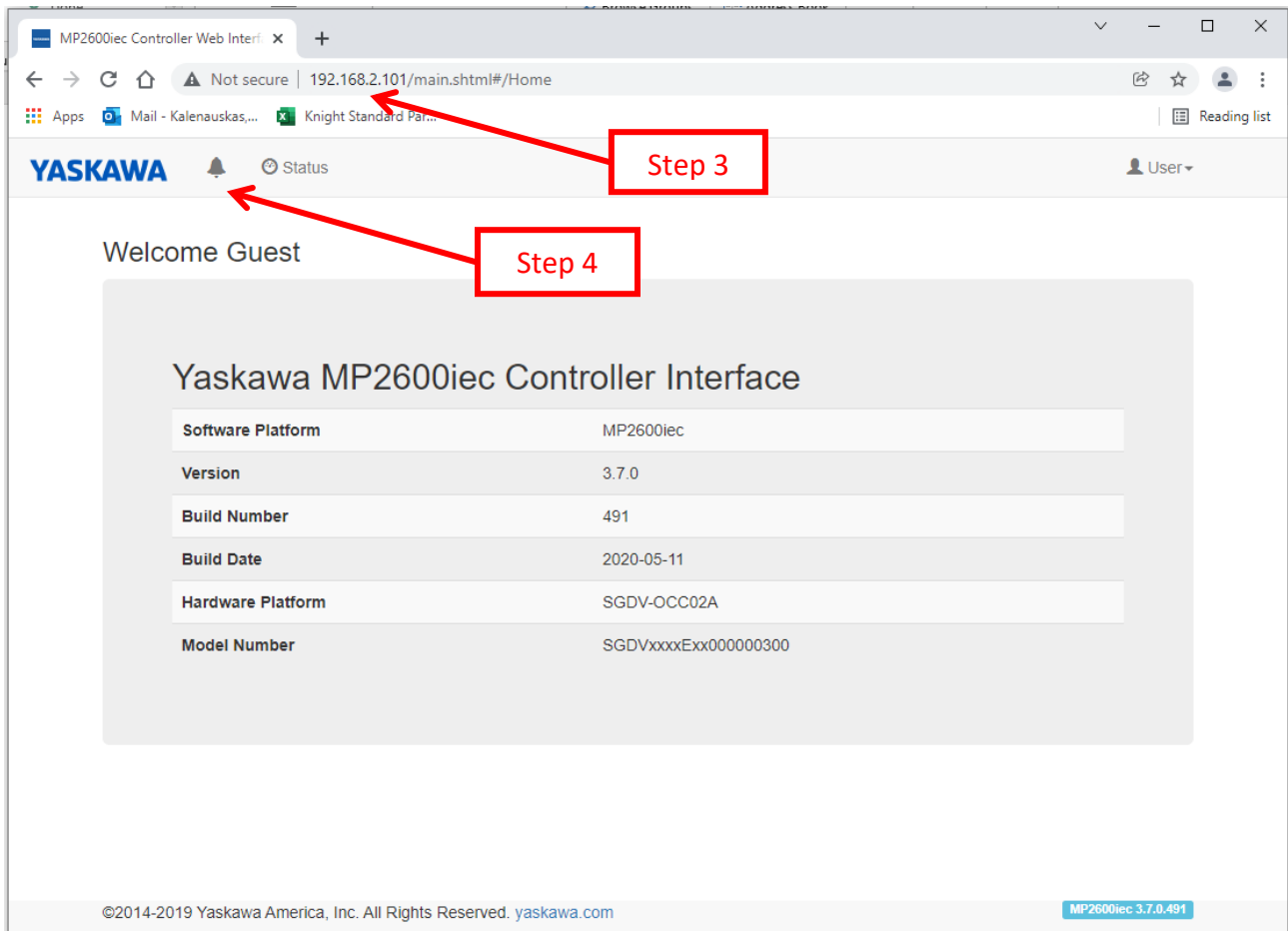


## Downloading Hoist Fault Log

1. Connect your workstation to the servo hoist while the hoist is powered on.
2. Verify your computer is set to a static IP
  - a. IP 192.168.2.100
  - b. Subnet 255.255.0.0
  - c. No Gateway
3. Using a web browser like Chrome navigate to the Hoist IP address, 192.168.2.101.
4. Click on the Bell Icon, Alarms, to be up the hoist alarm page.



The screenshot shows a web browser window with the URL `192.168.2.101/main.shtml#/Home`. The page header includes the YASKAWA logo, a bell icon for status, and a user profile. A red box labeled "Step 3" points to the bell icon. Below the header, the text "Welcome Guest" is displayed. A large grey box contains the title "Yaskawa MP2600iec Controller Interface" and a table of system information. A red box labeled "Step 4" points to the bell icon. The footer contains copyright information and the version number "MP2600iec 3.7.0.491".

Property	Value
Software Platform	MP2600iec
Version	3.7.0
Build Number	491
Build Date	2020-05-11
Hardware Platform	SGDV-OCC02A
Model Number	SGDVxxxExx000000300

5. Click on the "Alarm History" tab.
6. Click on "Save" to download the fault history as a HTML file.

MP2600iec Controller Web Interf x +

Not secure | 192.168.2.101/main.shtml#/Alarms

YASKAWA Status User

Alarms Alarms History Alarms Reference

Error Class	(Axis) Error Id	Source	Timestamp	Description	Save
340D	0002	RunStop_OK	2022-01-10 11:07:07	Step 5	Save
340D	0001	RunStop_Active	2022-01-10 11:07:06	>	Step 6
340D	0002	RunStop_OK	2022-01-10 11:01:46	>	
340D	0001	RunStop_Active	2022-01-10 11:01:45	>	
340D	0000	Drive_Power_On	2022-01-10 10:57:18	Prefix for User PLC Application alarms >	
340D	0002	RunStop_OK	2022-01-10 10:57:18	>	
340D	000A	CPU_Started	2022-01-10 10:57:18	>	
340D	0001	RunStop_Active	2022-01-10 10:49:52	>	
340D	0000	Drive_Power_On	2022-01-10 10:49:10	Prefix for User PLC Application alarms >	

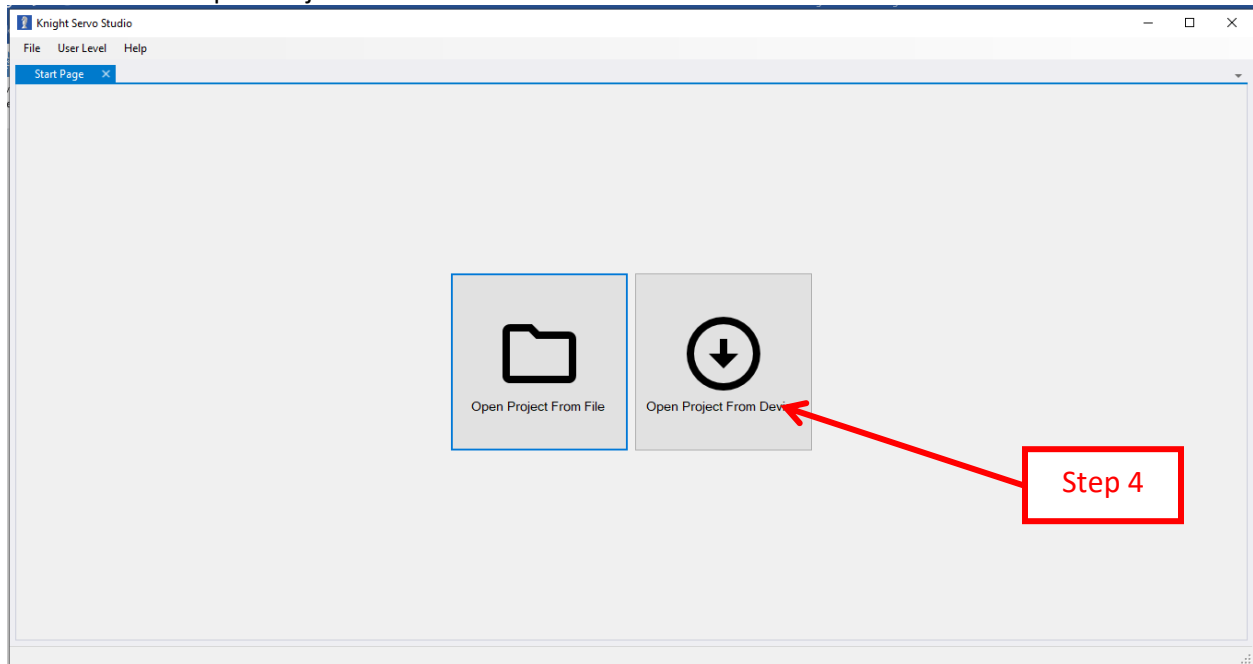
©2014-2019 Yaskawa America, Inc. All Rights Reserved. yaskawa.com MP2600iec 3.7.0.491

### Alarms History

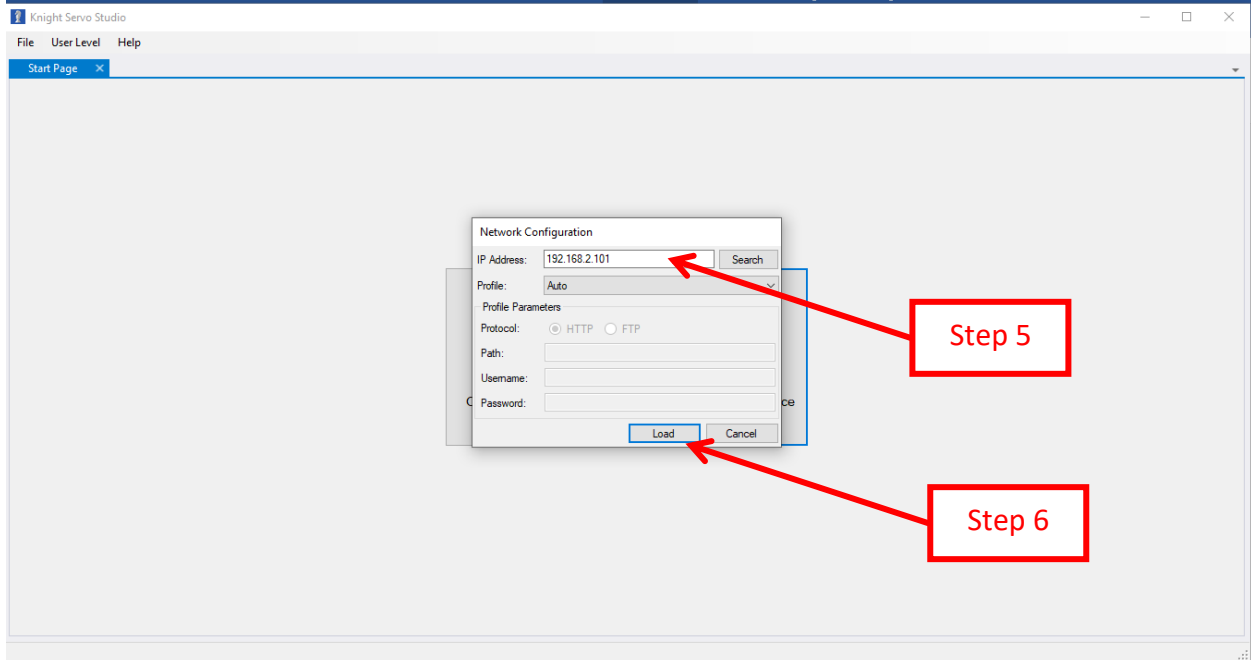
Error Class	(Axis) Error Id	Source	Timestamp	Description
340D	0002	RunStop_OK	Mon, 10 Jan 2022 16:07:07	*
340D	0001	RunStop_Active	Mon, 10 Jan 2022 16:07:06	*
340D	0002	RunStop_OK	Mon, 10 Jan 2022 16:01:46	*
340D	0001	RunStop_Active	Mon, 10 Jan 2022 16:01:45	*
340D	0000	Drive_Power_On	Mon, 10 Jan 2022 15:57:18	Prefix for User PLC Application alarms *
340D	0002	RunStop_OK	Mon, 10 Jan 2022 15:57:18	*
340D	000A	CPU_Started	Mon, 10 Jan 2022 15:57:18	*
340D	0001	RunStop_Active	Mon, 10 Jan 2022 15:49:52	*
340D	0000	Drive_Power_On	Mon, 10 Jan 2022 15:49:10	Prefix for User PLC Application alarms *
340D	0002	RunStop_OK	Mon, 10 Jan 2022 15:49:10	*
340D	000A	CPU_Started	Mon, 10 Jan 2022 15:49:10	*
340D	0001	RunStop_Active	Tue, 02 Nov 2021 16:54:52	*
340D	0002	RunStop_OK	Tue, 02 Nov 2021 16:54:12	*
340D	0001	RunStop_Active	Tue, 02 Nov 2021 16:54:12	*
340D	0002	RunStop_OK	Tue, 02 Nov 2021 16:54:01	*
340D	0001	RunStop_Active	Tue, 02 Nov 2021 16:54:00	*
340D	0000	Drive_Power_On	Tue, 02 Nov 2021 16:53:55	Prefix for User PLC Application alarms *
340D	0002	RunStop_OK	Tue, 02 Nov 2021 16:53:55	*
340D	000A	CPU_Started	Tue, 02 Nov 2021 16:53:55	*

## Downloading KSP File

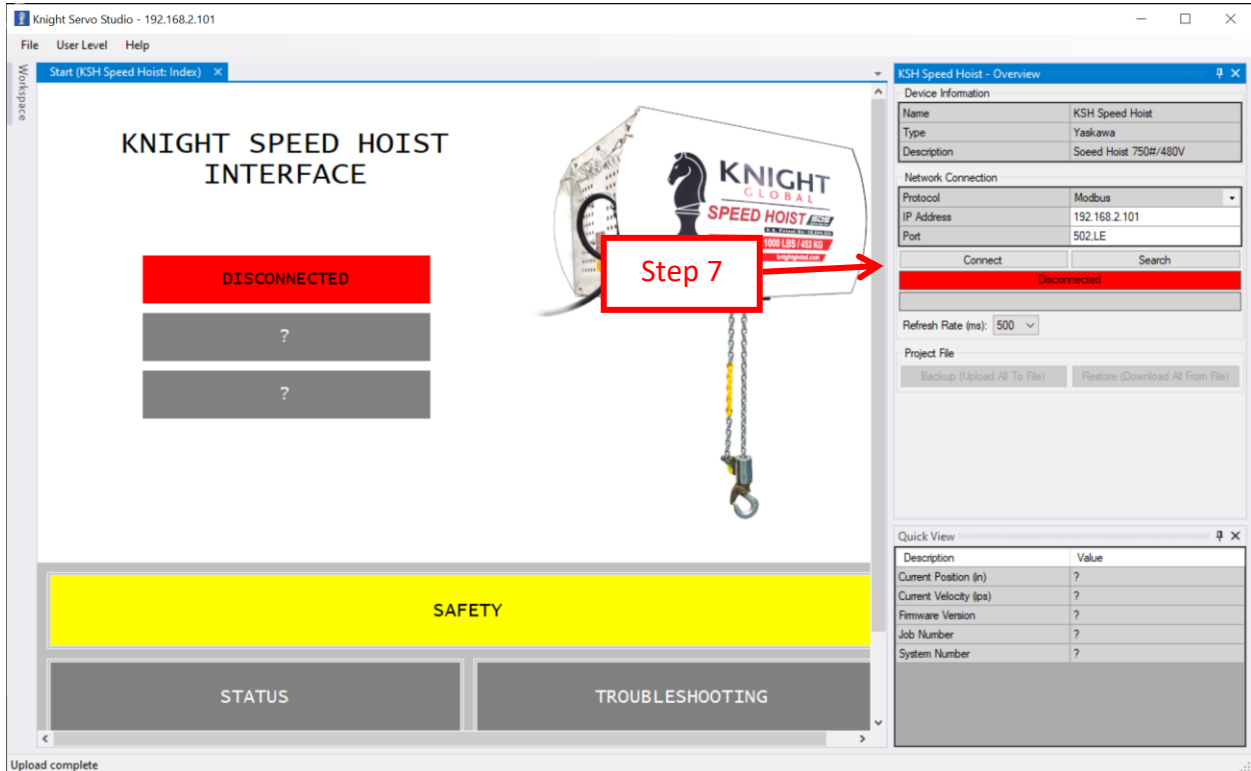
1. Connect your workstation to the servo hoist while the hoist is powered on.
2. Verify your computer is set to a static IP
  - a. IP 192.168.2.100
  - b. Subnet 255.255.0.0
  - c. No Gateway
3. Open Knight Servo Studio on the connected workstation.
4. Select "Open Project From Device"



5. Verify the Target IP Address 192.168.2.101.
6. Click the "Load" button.



7. Click the "Connect" Button on the Right Side. The Green Connected button should show. Once connected select "Backup (Upload All To File)." Please email the .KSP back for review.



8. Once connected select "Backup (Upload All To File)." Please email the .KSP back for review.

Knight Servo Studio - 192.168.2.101

File User Level Help


Start (KSH Speed Hoist: Index) X

# KNIGHT SPEED HOIST INTERFACE

CONNECTED

NO ALARMS ACTIVE

NO WARNINGS ACTIVE



SAFETY

STATUS TROUBLESHOOTING

Upload complete

### KSH Speed Hoist - Overview

Device Information

Name	KSH Speed Hoist
Type	Yaskawa
Description	Soeed Hoist 750#/480V

Network Connection

Protocol	Modbus
IP Address	192.168.2.101
Port	502.LE

Disconnect Search

Connected

Refresh Rate (ms): 500

Project File

Backup (Upload All To File) Restore (Download All From File)

**Step 8**

Quick View

Description	Value
Current Position (in)	0.099024
Current Velocity (ips)	0.000062
Firmware Version	20210504
Job Number	144041
System Number	1