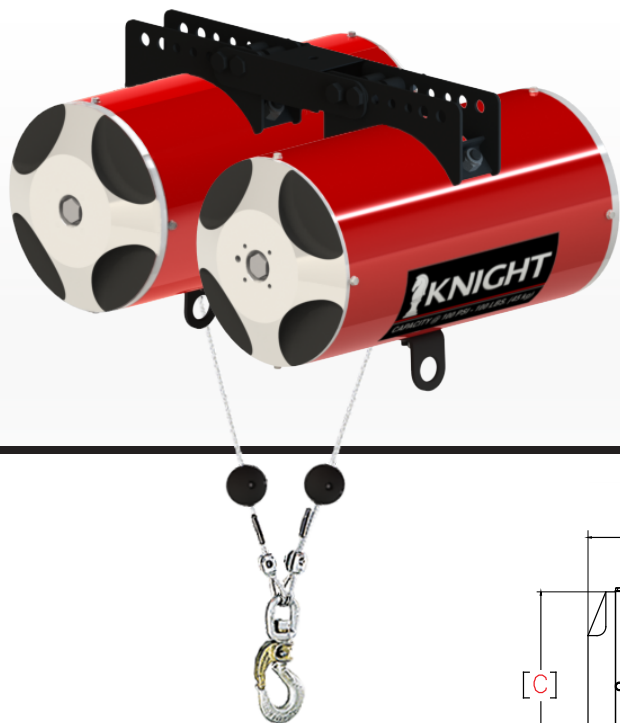
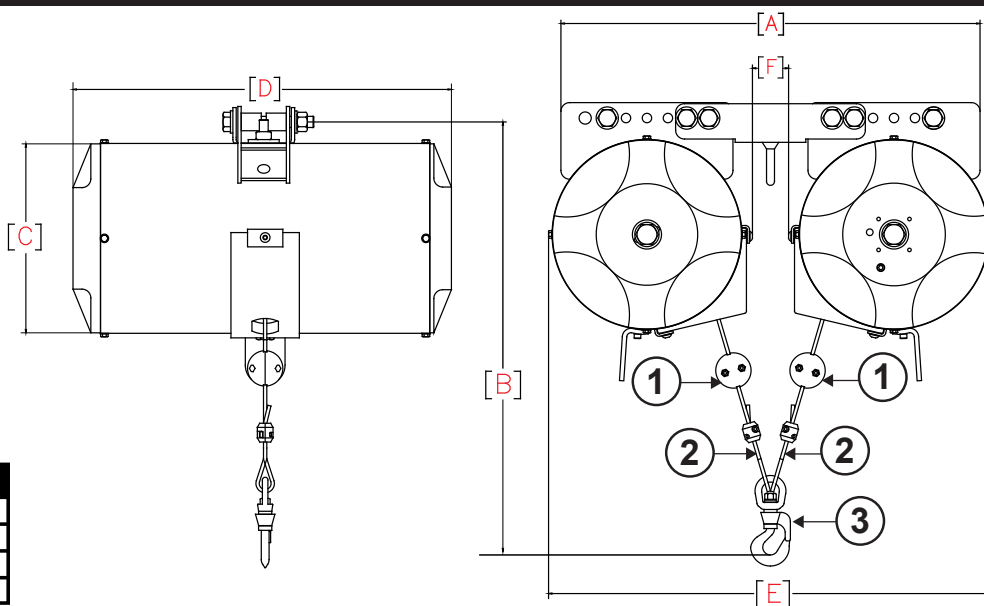


## TKBA Tandem Cable Air Balancer Series



Air Balancers are used in applications where a "float" condition is beneficial. Float allows for the hands-free final positioning of an object. The up/down speed of a air balancer is quicker when compared to a hoist and allows for a "feathering" operation when locating the load. The pendant controls are ergonomically designed incorporating color coded thumb levers.

Tandem Cable Air Balancers use a carbon steel Galvanized Independent Wire Rope Core (GIWRC) with a minimum breaking strength of 1815 kg (4000 lbs) and an actual test breaking load of 2687 kg (5923 lbs.). The 1/4" (6.35 mm) cable has a minimum breaking strength of 3175 kg (7000 lbs.).



TKBA CABLE SERIES SPARE PARTS			
3	1	BPA2086	BALANCER HOOK
2	2	BPD2030	CABLE
1	2	BPA2009	TRAVEL LIMIT INDICATOR
DET	QTY	PART #	DESCRIPTION

### Formula for Air Balancer sizing:

Example: plant air 80 psi, 350 air balancer, 80% load capability  
 $(0.80 \text{ air supply} \times 350 \text{ lbs.} = 280 \times .80 = 224 \text{ lbs. load capability}).$

**Rated at 100 PSI**

MODEL #	RATED CAPACITY lbs [kg]	TRAVEL in [mm]	(A) in [mm]	(B) (min.) in [mm]	(C) in [mm]	(D) in [mm]	(E) in [mm]	(F) in [mm]	UNIT WEIGHT lbs [kg]
TKBA700-073	700 [318]	73 [1,854]	8 1/2 [216]	25 1/4 [641]	10 3/4 [273]	15 1/2 [394]	25 1/8 [639]	3 1/4 [83]	154 [70]
TKBA1000-080	1,000 [454]	80 [2,032]	10 3/4 [273]	25 1/4 [641]	10 3/4 [273]	16 1/2 [419]	25 1/8 [639]	3 1/4 [83]	226 [102]
TKBA1400-054	1,400 [635]	54 [1,372]	8 3/4 [222]	25 1/4 [641]	10 3/4 [273]	16 3/4 [426]	25 1/8 [639]	3 1/4 [83]	184 [83]

**\*\* Knight recommends the use of a high performance, extreme pressure, anti-wear food grade penetrating oil that penetrates and lubricates cable and all types of moving parts. (Lubri-Link-Green®)**

