

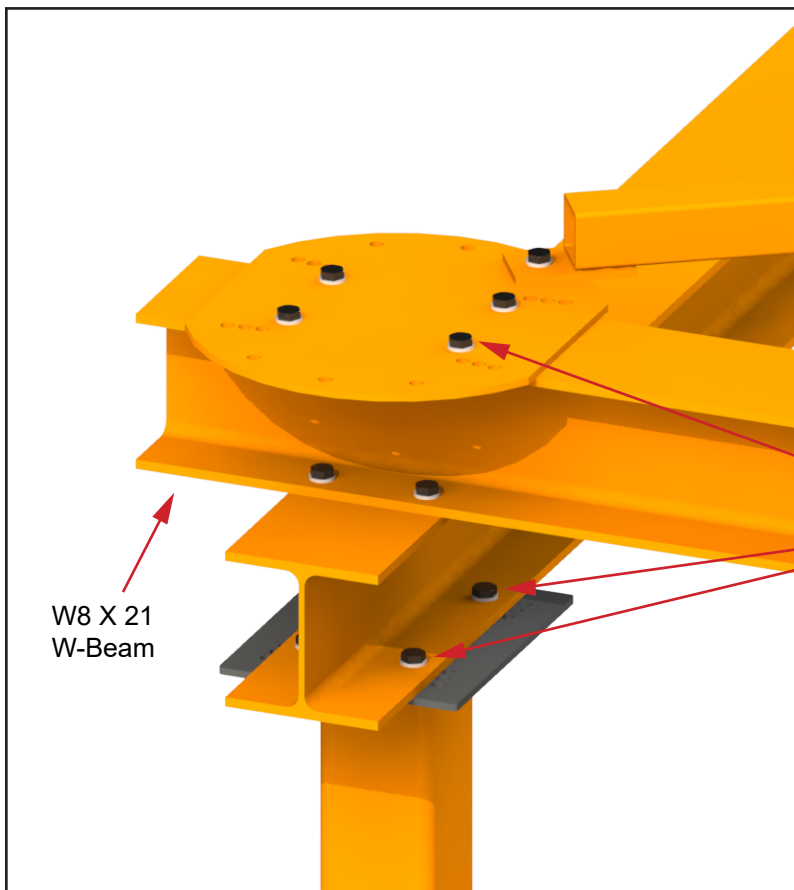
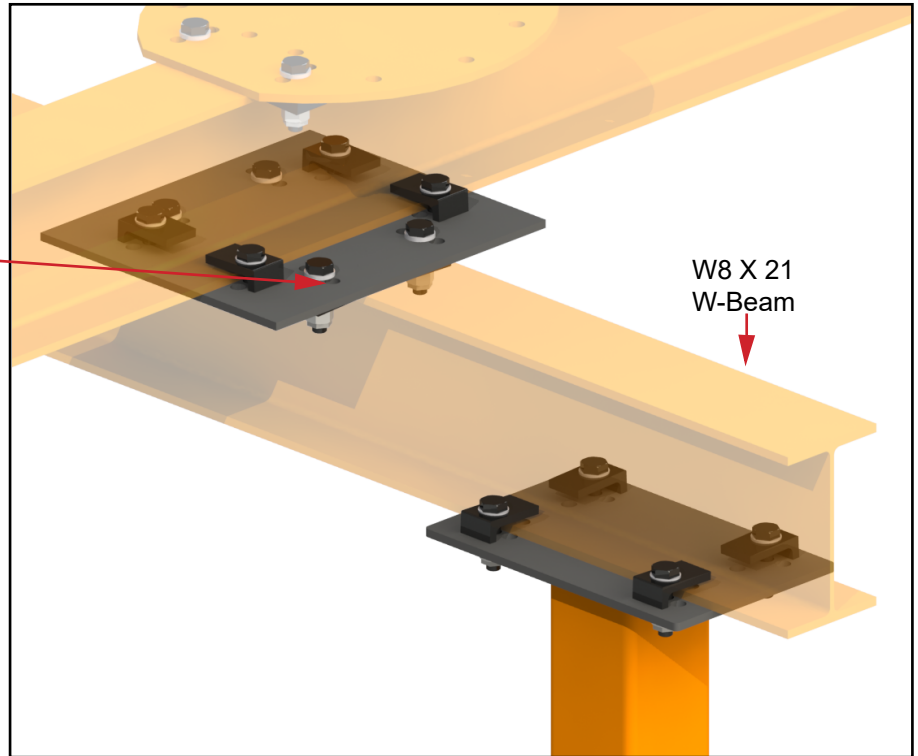
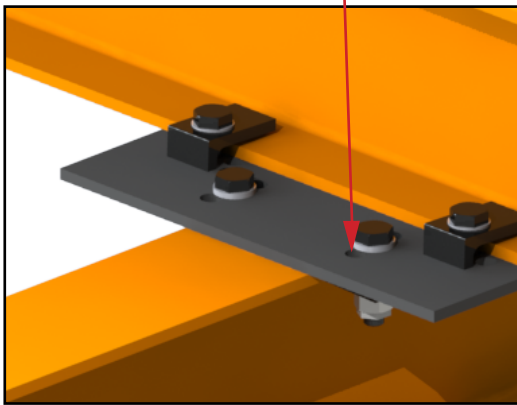


KNIGHT GLOBAL

MRAS4389 DIRECT FLOOR MOUNTED RAIL SYSTEM POSTS

TOE-CLAMP STYLE

Adjustment holes to cover W-Beam
Flange Width tolerances.



BOLT-TOGETHER STYLE

- A325 Structural bolt.
- A194 Hex Nut Heavy Hex Nut
- F436 Washer Structural Washer
- Hex Pal Nut